

A NEW *GLARENIS* FROM THE WESTERN UNITED STATES
(SCARABAEIDAE: COLEOPTERA)

ROBERT D. GORDON, *Systematic Entomology Laboratory, Entomology Research Division, Agricultural Research Service, USDA*¹

ABSTRACT—*Glarenis medialis*, n. sp., from the western United States is described and pertinent characters are illustrated.

This description was to have been published in a comprehensive review of the genus for North America, but the necessity of making the name available for inclusion in M. H. Hatch's forthcoming volume of "Beetles of the Pacific Northwest" has prompted earlier publication.

Glarenis medialis, n. sp.
(Figs. 1-4)

Male.—Length 3.50 mm., width 2.10 mm. Form robust, slightly wider posteriorly; reddish brown, teeth of protibia and mandibles piceous. Head slightly tuberculate, basal one-fourth smooth; anterior clypeal margin broadly emarginate with traces of tubercles, each anterior angle with a blunt tooth (fig. 1); mandible obtusely angulate on outer margin. Pronotum two-thirds as long as wide; short longitudinal carinae present except in impressions; surface with short sparse setae, lateral and posterior margins with a fringe of coarse setae; median indentation very feebly recessed; feeble indentation near apical margin on each side of middle; shallow fovea on each lateral margin extending from near hind angle to middle; a shallow fovea on each side of middle near median impression. Elytral striae each with a single row of coarse punctures; intervals slightly convex with traces of costae present; sparsely pubescent, pubescence originating adjacent to space between punctures. Mesotibia very slightly sinuate on outer margin, four spines present on outer margin from middle nearly to apex, projecting at apex (fig. 2). Postero-superior margin of hind trochanter with a single tooth near femur (fig. 3); postero-superior margin of hind femur with one small, blunt, median tooth (fig. 3); metatibia broadly triangular, moderate projection on outer margin medially, tubercles irregularly scattered over surface, inner margin strongly pubescent (fig. 3). Genitalia with aedeagus flat, spatulate, tip rounded; paramere slightly sinuate on inner margin, tip bluntly rounded (fig. 4).

Female.—Length 3.55 mm., width 2.20 mm. Similar to male except tubercles on the head slightly coarser and anterior clypeal margin more strongly tuberculate.

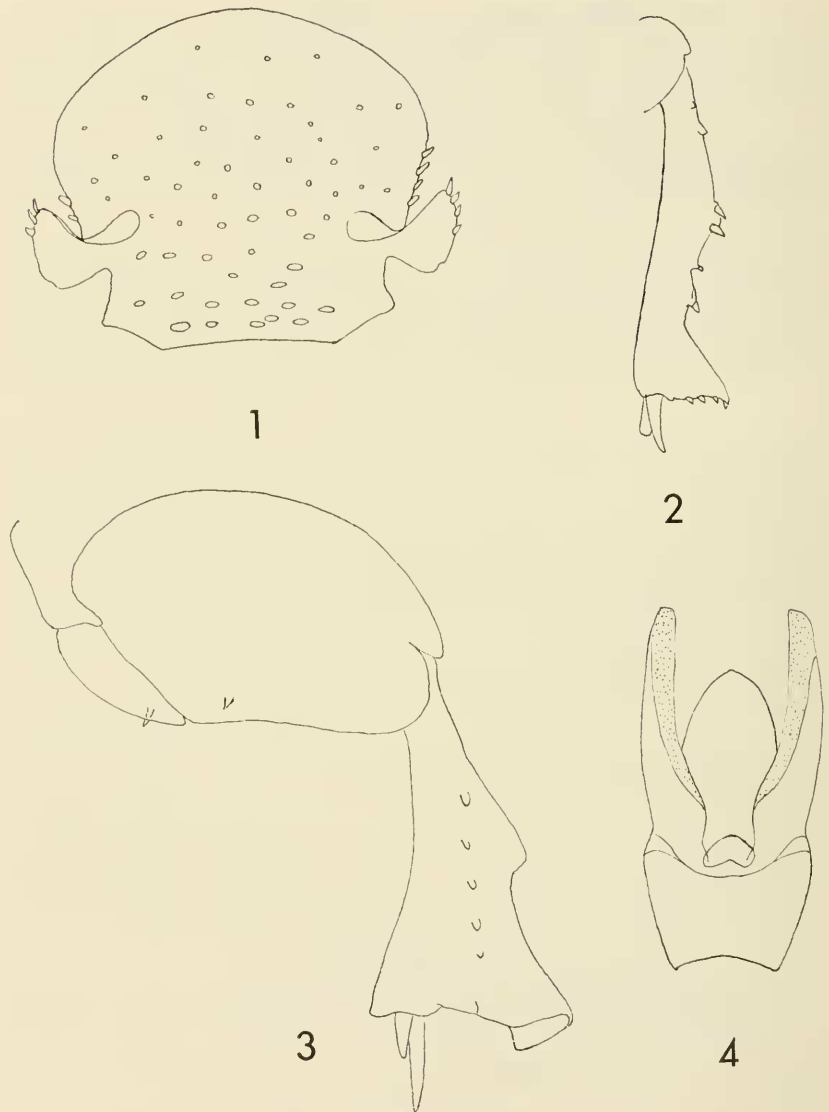
Holotype ♂.—Utah; Logan, June 23, 1936, G. F. Knowlton; USNM 70408.

Allotype ♀.—Utah; Richfield, June 15, 1930, Light trap; USNM.

Paratypes.—1, same data as allotype; USNM. 1, Washington; Toppenish, June 24, 1957, David Bishop; Hatch collection.

This species most nearly resembles *G. confusa* Brown, which is known only from the unique type collected at Cedar City, Utah. Unlike *medialis*, *G. confusa* lacks a tooth on the postero-superior

¹ Mail address: c/o U. S. National Museum, Washington, D. C. 20560.



Figs. 1-4, *Glarexis medialis*, n. sp., holotype ♂: 1, head, frontal view; 2, mesotibia; 3, posterior trochanter, femur and tibia; 4, genitalia, dorsal view.

margin of the hind femur, and the male genitalia are quite distinctive for each species.

Thanks are due H. D. Blocker, Kansas State University, for the loan of the type of *confusa*.